

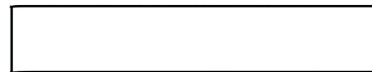
Camera Valentine Box

A PICTURE-PERFECT PLACE TO COLLECT VALENTINES

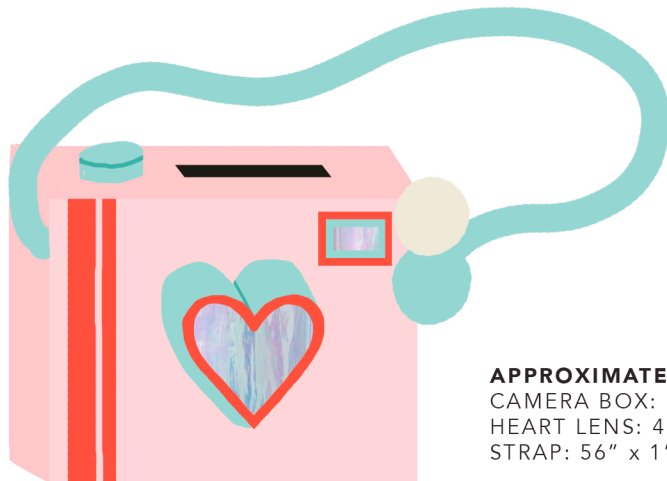
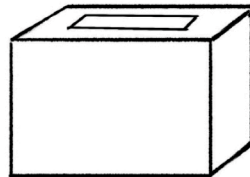
SUPPLIES:

- MEDIUM-SIZED BOX (SHOE BOX, TISSUE BOX or SMALL SHIPPING BOX) FOR BODY
- CARDBOARD SCRAPS (FOR ACCENTS)
- CARD STOCK IN 3 DIFFERENT COLORS
(We used pink, red and light blue.)
- PAINT TO MATCH CARD STOCK
- IRRIDESCENT CELLOPHANE
- CONFETTI
- BOTTLE CAP
- RIBBON (FOR STRAP)
- POM POMS
- SCRATCH PAPER
- CRAFT KNIFE
- CUTTING MAT
- SCISSORS
- INVISIBLE TAPE
- GLUE STICK or SPRAY MOUNT
- HOT GLUE GUN

CARDBOARD



CARDBOARD BOX



APPROXIMATE SIZES:

CAMERA BOX: 10.5" x 8.5" x 5"
HEART LENS: 4.75" x 4.75" x 2.5"
STRAP: 56" x 1"



STEPS

1. DECORATE THE CAMERA BODY. Cut a hole large enough for valentines in the top of the box. Paint the box pink or cover it with card stock (be sure to leave the mail slot open). Use the craft knife to cut two slits as wide as your ribbon (they should look like an equal sign) about a 1/2" inch from the top in the center of each side of the box. Decorate the camera box with paint or card stock as desired.

2. ADD THE STRAP. Thread one end of the ribbon through into the top slit and out of the bottom one on one side of the box. Repeat on the other side. Tie the pom poms to one side of the strap.

3. CUT OUT THE LENS: Draw a heart about half the height of your box on a piece of scratch paper; cut it out and trace it on to 2 pieces of cardboard, 1 piece of pink card stock, and 1 piece of iridescent cellophane and cut them out. Cut light blue card stock into 2 1/2" wide strips, each long enough to fit around one side of the heart.

4. BUILD THE LENS:

- To make the front of the lens, cut the inside out about 1/4" inside the border to make a frame. Paint it red and glue the cellophane heart to the back.
- For the back of the lens, tape or glue the pink card stock heart to the cardboard heart.
- Place the lens back on your work surface with the pink side facing up. Apply hot glue around the side of one half of the heart, and starting at top center, attach one strip of blue card stock to make the side of the lens. Apply hot glue to the same half of the front of the lens and attach it to the strip.
- Pour the confetti inside the lens.
- Hot glue the other strip of card stock to the open half of the heart. Use small pieces of tape to hold the strips together.
- Glue the lens to the front of the camera.

5. MAKE THE BUTTON: Cut a piece of red card stock in a circle a little bigger than the bottle top and glue it to the top of the camera. Paint the bottle cap blue and glue it to the red circle.

6. MAKE THE FLASH: Cut a rectangle from piece of red card stock and glue it to the upper right corner of the camera. Cut 2 rectangles slightly smaller cardboard and 1 from iridescent cellophane. Cut the centers out of the cardboard rectangles, leaving a 1/4" frame. Paint them blue, allow to dry, and glue the cellophane between them. Glue the "flash" to the red rectangle.



HALLMARK
IDEAS + INSPIRATION

© 2023 Hallmark Licensing, LLC. All rights reserved.
For personal use only. Not for commercial use.
ideas.hallmark.com